



AGRICULTURAL SOCIETY OF KENYA



NAIROBI INTERNATIONAL TRADE FAIR




P.O Box 21340-00505
Tel: 020 2641067/8/ 0724 643701
Jamhuri Park, Nairobi
Email: info@niftf.ask.co.ke
website: www.ask.co.ke

THE AGRICULTURAL SOCIETY OF KENYA

"Your Leading Exhibition Partner"

 [agricultural Society of Kenya](https://www.facebook.com/agriculturalSocietyofKenya)

 [@AgriSocietyOfKe](https://twitter.com/AgriSocietyOfKe)



SPACE BOOKINGS & UTILITY CHARGES



OUTDOOR OPEN SPACE

Central Business District:

Area Measurement	Amount
10 Feet x 10 Feet	115,000
15 Feet x 15 Feet	202,500
25 Feet x 25 Feet	265,000
50 Feet x 50 Feet	327,500
75 Feet x 75 Feet	390,000
90 Feet x 90 Feet	452,500

Off Central Business District:

Area Measurement	Amount
10 Feet x 10 Feet	85,000
15 Feet x 15 Feet	165,000
25 Feet x 25 Feet	215,000
50 Feet x 50 Feet	265,000
75 Feet x 75 Feet	315,000
90 Feet x 90 Feet	365,000

N/B. All charges are Exclusive of VAT

Outdoor open space package includes;

- Open ground space with minimal grass ground cover
- General cleaning of the show ground.
- General security during the trade fair
- Entry to the exhibition catalogue and website
- Entry to the exhibition for Company delegates
- Company delegates entry to the exhibition

EXPO CENTRE FACILITIES

(a) For Foreign Exhibitors

\$ 2000 per 9 sq. m- 3mx3m booths (VAT inclusive)

(b) For Local Exhibitors

Kshs. 150,000 per 9sq.m -3mx3m booths (VAT Exclusive)

Standard Exhibition Booth Package includes:

- Floor space fitted in fitted in standard booth system frame of 3mx3m
- Fascia board with company name
- 1 table and 2 chairs
- Waste basket
- Electric supply plug point
- General cleaning plug point
- General supply plug point
- General cleaning of aisles
- General pavilion security during the exhibition
- Company delegates entry to the exhibition
- Entry to the exhibition catalogue and website

A non refundable booking fee Of 50% will be required upon confirmation of participation.

Air Travel, Accommodation and Local transportation are not included in the above costings.

About

Nairobi International Trade Fair

The Government of Kenya and Agricultural Society other agencies that include the ministry of Agriculture and other government departments hold the Nairobi International Trade Fair (NITF) seven day annual exhibition as a convergence point for Trade, Commerce and as an enabler for exchange of knowledge in trade and agricultural sector.

The NITF attracts over 250 exhibitors in agri-business in interdependent services such as Insurance, Finance, Regulators, and innovators, Logistics, Energy, Security and Research with an average of 500,000 visitors.

Over the years, the President remains the Patron of Agricultural Society of Kenya (ASK) due to its social-economic contribution.

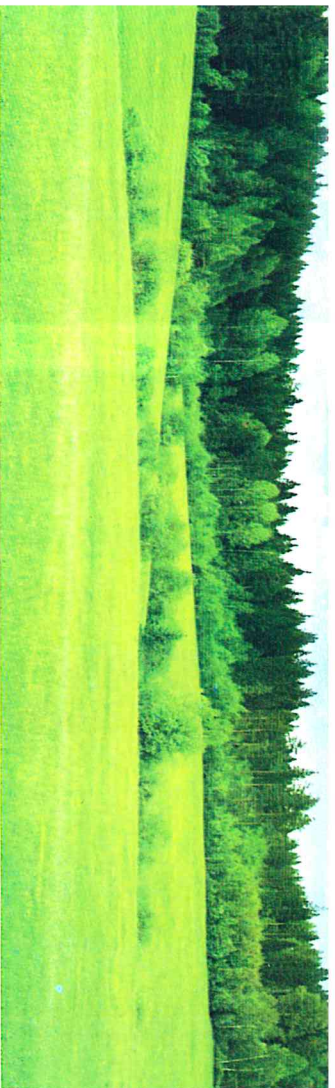
NITF is held at the Jamhuri Park Show grounds hosted by the ASK, which is 10km from the Nairobi Central Business District, Ngong Forest surrounded by major shopping malls.

The location enjoys accessibility through public and private transport with over five (5) entrances (gates) from either direction.

Our offers are both permanent and semi- permanent structures and open space to suit alternative exhibition needs including neat well-manicured open lawns with a serene environment that is ideal for outdoor exhibiti

Further still NITF towards improving our exhibitors' experience, through partnerships with both government and private agencies we can facilitate the following:

- Work permits and migration on request through the Ministry of Foreign Affairs
- Logistics services (Courier, Customs, and Clearing & Forwarding) through Postal Corporation of Kenya (PCK).Traveling, boarding and from the exhibition venue.



Why Exhibit at the Nairobi International Trade Fair

Get known/ publicity; create demand and market opportunities or expertise in agri-business locally and internationally through; Collect contact, forming collaborations and proding information

Exhibition opportunities

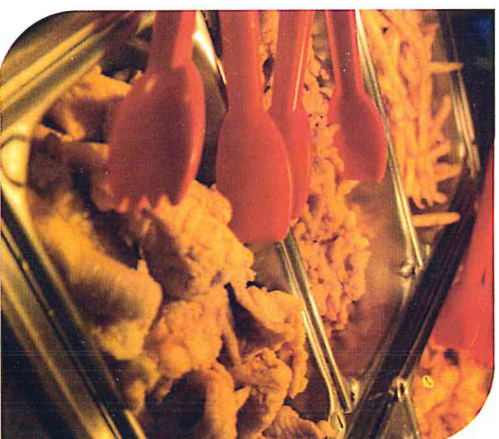
1. Convenient exhibition Centre customized to meet the exhibitors' needs that range from structural to open space allocated on demand/ specifications: conducive for outdoor displays and events whereby you will secure them to your own preference including erecting tents.



2. Space for Recreational facilities for children and entertainment / playing that includes horse riding, swings



3. Eateries attractive in cost and set up to small, medium and high end hotels also available for hire.



4. A ground for all sector players to exhibit from farm in-put to processing. This also offers an opportunity to converge and establish collaborations for agri-business



5. The exhibition is open for Learning institutions so as to share or borrow expertise / knowledge, new technologies and exposure.



6. A designated area for both local and international Livestock farmers/ breeders to exhibit. The environment is conducive for feeding among others. This presents opportunities for agro-veterinary manufacturers, dealers and learning institutions to interact with their target market"

